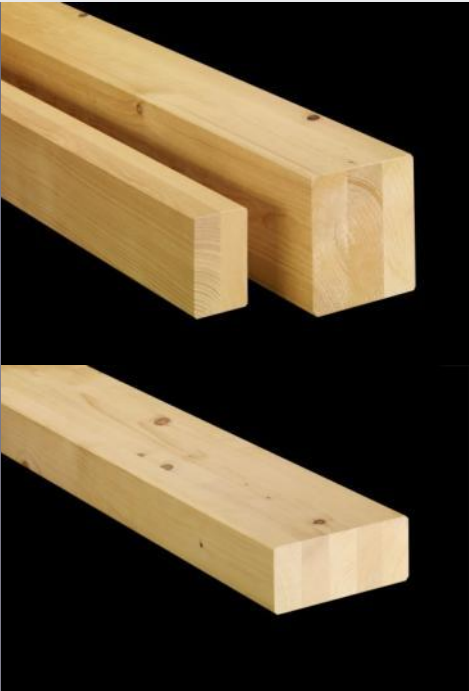
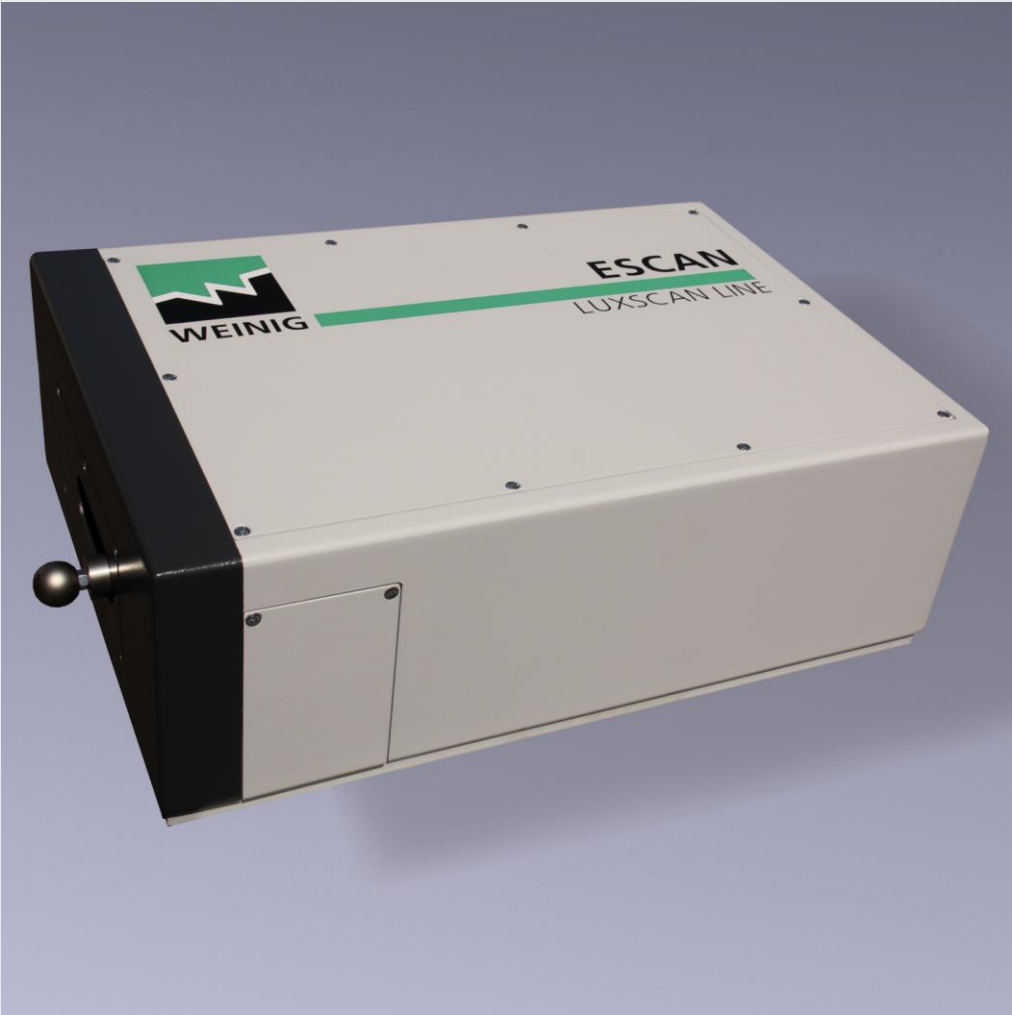


EScan Series

Strength grading and density measurement
at its best

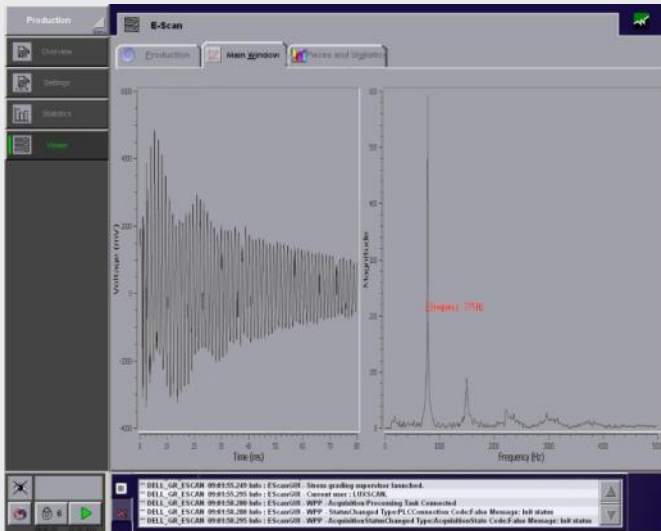


Takes you into new dimensions Escan strength grading from the WEINIG optimizing specialists

The EScan LuxscanLine marks a step into a new application for WEINIG. With EScan the product portfolio has been increased to optimized stress grading. A variety of different stress grading options is available now for the production of gluelam beams, DUO,TRIO and other strength based products.

Benefit from the increases in performance and check out the multiple options and combinations with our proven CombiScan+ series.





Benefit from cutting edge technology

- Up to 180 boards /minute
- Dynamic MOE measurement by laser interferometer
- Density computation by dynamic weighing and volume
- In line measurement (no need to stop the boards)
- Easily integrated into a cross conveyor
- User Friendly graphical user interface with touch screen
- Extensive production reports
- Built in network capabilities
- Direct integration with optical and x-ray scanners of the CombiScan+ series
- PC based system
- Options: ink jet printing device

Escan: the way it works

EScan is a grading machine for structural wood pieces, according to the standard EN-14081. EScan predicts the strength class of a board moving on a cross conveyor, by computing the dynamic Modulus of Elasticity (MOEdyn,long) and the density ρ . A mechanical device hits the board in order to create a vibration, which is measured by a laser interferometer. The density (ρ) results from combining the weight and dimension measurements. The bending strength is then predicted via statistical modelling. This proven and reliable technique provides consistent results for the prediction of the mechanical resistance – strength class- of a board.



Technical Data	Escan 60	Escan 120	Escan 180
Max. boards per min	Up to 60	Up to 120	Up to 180
Min. / Max. input length (mm)	1800 - 6000	1800 - 6000	1800 - 6000
Min. / Max. input width (mm)	55 - 315	70 - 315	100 - 315
Min. / Max. input thickness (mm)	18 - 160	18 - 160	18 - 160
Working height (mm)	Upon application	Upon application	Upon application
Board alignment within (mm)	+/- 5	+/- 5	+/- 5
Board end	Clean cut	Clean cut	Clean cut

EScan Series



Produktion:

Luxscan Technologies Sarl
ZARE Ouest
L-4384 Ehlerange
Luxembourg

Telefon +352 540 416
Telefax +352 540 417
E-Mail info@luxscan.de
Internet www.luxscan.com

Vertrieb:

WEINIG GROUP
Weinigstraße 2/4
97941 Tauberbischofsheim
Deutschland

Telefon +49 (0) 9341 / 86-0
Telefax +49 (0) 9341 / 70 80
E-Mail info@weinig.de
Internet www.weinig.com