

EasyScan

The simplest way of optimizing



WEINIG

The most economical optimizing solution

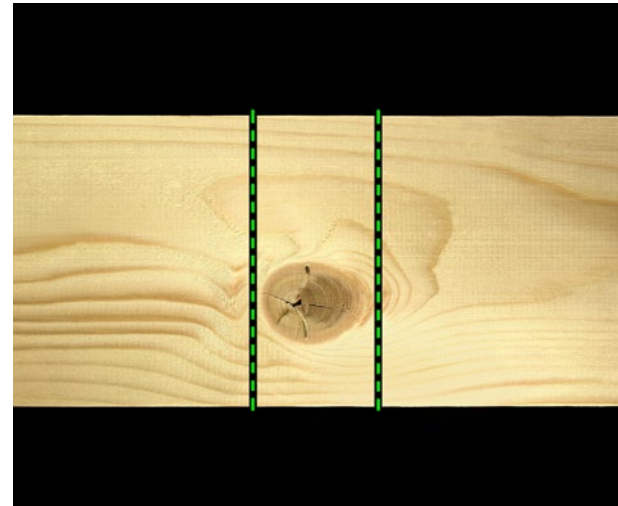
The EasyScan LuxscanLine series sets a new benchmark for economical scanning. This innovative scanner has been developed from the well known CombiScan+. It features high performance combined with economical production and reasonable pricing. With the EasyScan LuxscanLine optimizing becomes affordable for everyone.





Optimizing the simplest way

For cross-cutting there is always immense optimization potential with regards to yield, quality, economy and profit maximization. The EasyScan takes a key role in this regard. Featuring various sensors, the EasyScan provides a cutlist for one cross-cut saw. Taking into account information from the customer about products, qualities, scope, values, yield, etc. It optimizes the timber to generate the largest benefits. Maximum increases in production and full capacity from connected machines leads to lower personal costs and a higher yield. Together with other machines from WEINIG you benefit from a valuable synergy.



Profitable, board by board

The EasyScan also allows the optimization of personal costs. The production is controlled at the push of a button and long training periods for new employees are a thing of the past. Taking into account the low investment costs, as well as its superior optimizing software, the EasyScan provides a fast return on investment.

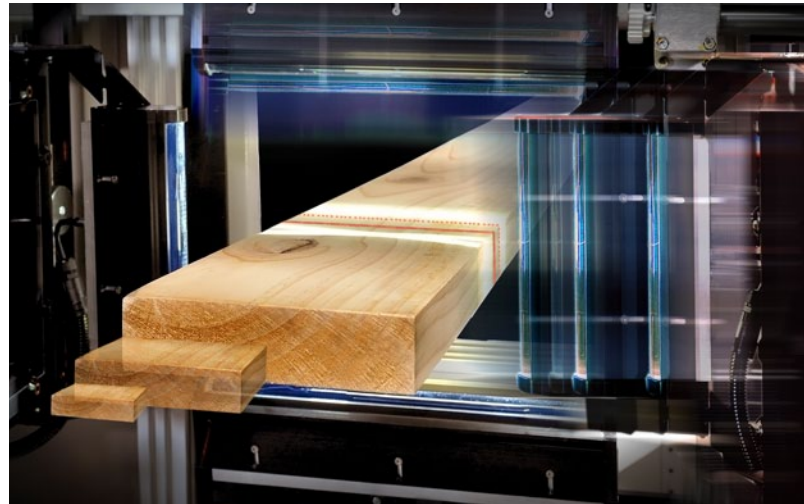
Improved accuracy of cutting and better yield, especially for fix length production, makes the EasyScan a profitable and future proof investment.



Simple adjustment is the key

Following the “smart & simple” principle the EasyScan features a streamline design. Just like the well known CombiScan+ it comes with superior software, designed for simpler usage. Making adjustments and calibration as short as possible leads to increased production time and higher output. Even though the software has been simplified the EasyScan still supplies a multitude of data to control your production.

Automatic adjustment of width as well as thickness limits mistakes and reduces the risk of production loss. In the meantime the Cross Concept Construction (CCC) keeps the cameras in the ideal position for superior detection results.



High quality components

Using high quality sensors and equipment the EasyScan is able to provide a defined performance regarding production targets. Using quality LEDs together with the ideal sensor position for any board dimension it guarantees the best possible optimization performance.

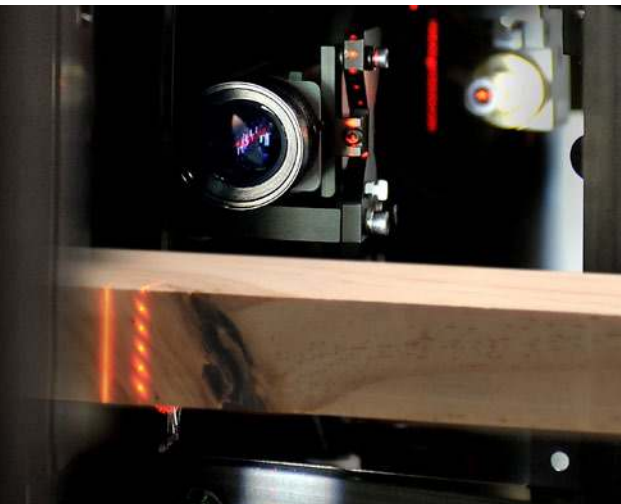
With its small footprint it is ready to be used in various line layouts either as an upgrade or in a new line. This way it opens doors for companies of any size to optimize.

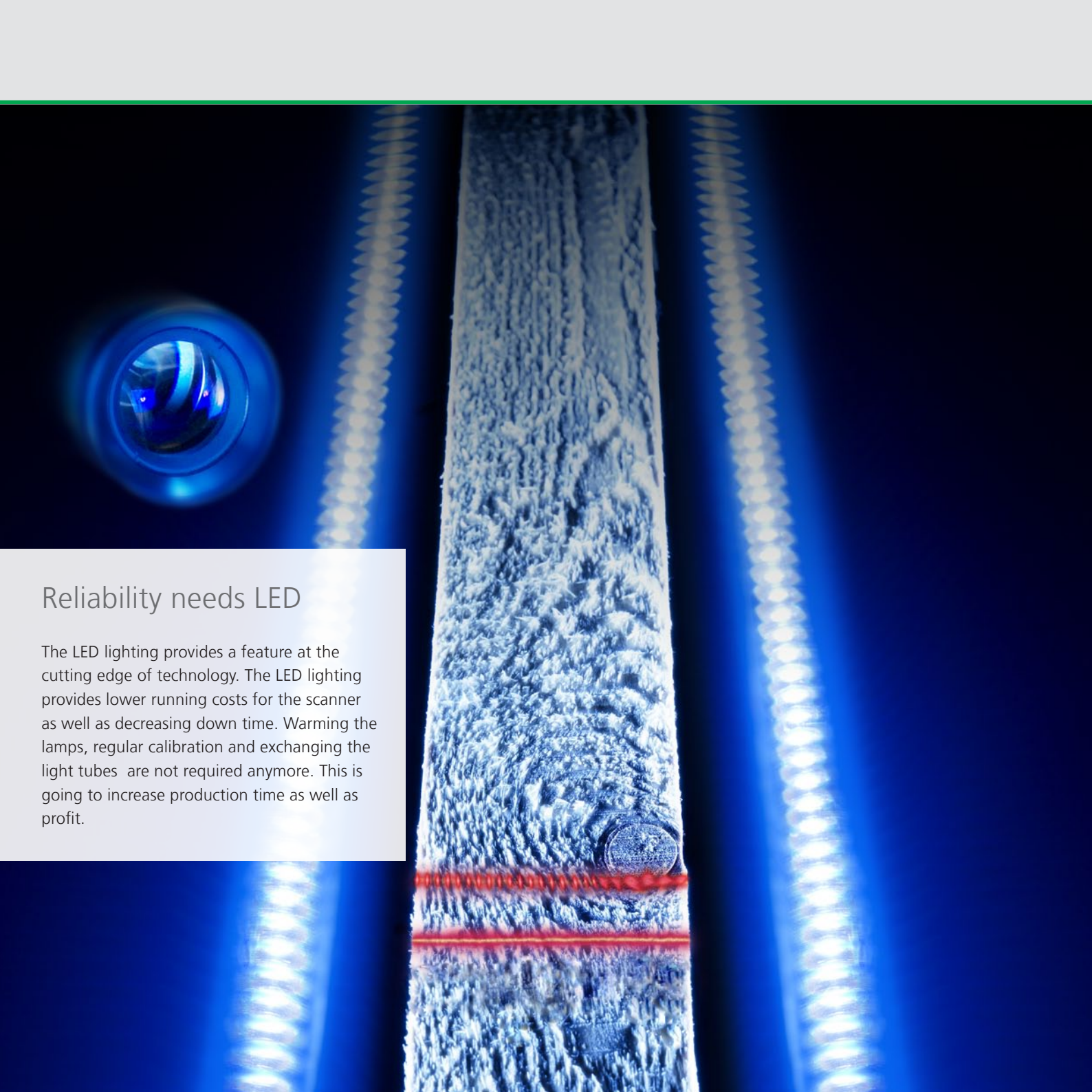


No compromise

Based on the CombiScan+, WEINIG has simplified the new EasyScan to the max without cutting corners. Keeping the design simple and the technology superior the outcome is a very robust and rock solid machine.

Proven sensor and support technology in combination with solid metal parts down to the sliding doors, enhance the stability of the machine. At the same time the CCC technology provides a short gap between infeed and outfeed belts for the best possible transport as well as ideal camera positioning.



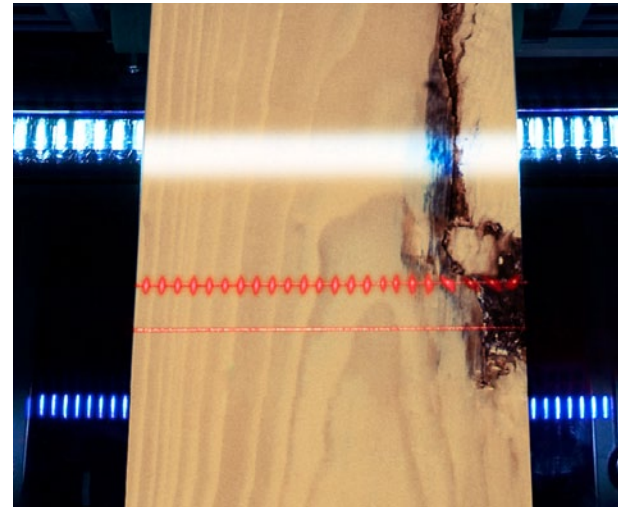


Reliability needs LED

The LED lighting provides a feature at the cutting edge of technology. The LED lighting provides lower running costs for the scanner as well as decreasing down time. Warming the lamps, regular calibration and exchanging the light tubes are not required anymore. This is going to increase production time as well as profit.

Laser cameras – the proven sensor technology

All our systems are fitted with laser cameras as standard equipment. With very high scan rates, the best detection and results are guaranteed. With continuous development in these industrial sensors the performance is continually improving. Using this technology it is possible to identify defects such as knots, pith cracks, etc. The 3D laser system also allows detection of 3D surface defects such as holes, wane and edge defects. The grain orientation is picked up by the dot laser, which is a major plus for finger joint products.



The color module

Standard scanners face serious issues as soon as it comes to accurately identifying color defects. Color defects are addressed by the new generation color module, which improves the detection of the scanner. A high resolution in both length and width measurement provides a high detection of color defects. Defects such as blue stain are identified with the highest accuracy. The color module is an option available depending on the application requirements.












Powerful software based on CombiScan+

For cross-cutting there is always immense optimization potential with regard to yield, quality, automation, economy, and profit maximization. Scanners situated upstream in an automated production process take over a key role in the operation. At this point of the process powerful software is needed. The EasyScan features software adapted from the proven CombiScan+. Improvements in simplicity as well as usability strengthen the easy access to the system without weakening its optimization power.

As the EasyScan supports advanced optimization algorithms it can be used in many different cross-cutting applications.

Overview of the EasyScan specification:

The table shows the standard technical specifications. For further, more detailed information according to your individual needs please contact an expert from WEINIG.

Technical Data		EasyScan	
Max. feed speed (m/min)		180 m/min	
Max. pieces per minute		20	
Length		1200 mm - 6500 mm	
Width		40 mm - 150 mm	/ 50 mm - 260 mm
Random width		No	
Thickness		10 mm - 60 mm	/ 10 mm - 100 mm
Species		Softwood	
Working height		920 mm	
Options			
Laser cam			
Dot laser			
LED			
Color			
Automatic adjustment for dims.			
Touchscreen			
Remote control			

Technical changes possible. Statements and illustrations in this brochure include optional extras which are not included in the standard specifications. Covers sometimes removed for photographic purposes.

● Standard ○ Option



CombiScan+ for advanced Optimizing

The CombiScan+ is the next step up from the EasyScan. It is equipped with various options including X-Ray. The strong hardware comes with the most accurate defect detection and very powerful optimizing tools. Compared to the EasyScan the CombiScan+ offers almost unlimited options. Speeds of up to 300 m/min, up to 3 saws, chop, rip or sort applications, random width applications, the most sensitive defect requirements and very advanced optimizing demands... The CombiScan+ is the solution for all of these.

What about stress grading?

Stress grading appears to be one of the most interesting fields of scanning technology, as the laws regarding wooden construction products are changing in favor of machine grading. The Escan LuxscanLine covers various numbers of species and growth areas. Certified to EN 14081 for sorting the Escan is a big step towards a new market. It is capable of scanning up to 180 boards per minute and can be upgraded with a wide range of different options, such as density measurement, moisture meter etc.



WEINIG QUALITY

All-round program for solid-wood processing

WEINIG is your technological advantage. And has been for over 100 years. WEINIG quality makes our partners in industry and artisan trades to

winners over the global competition. With machines and systems which set standards for performance and profitability. With intelligent production

concepts for maximum added value. And with customized solutions – from applications through to services.



SEPARATING · CUTTING · OPTIMIZING · FINGER-JOINTING · GLUING · PLANING AND PROFILING · WINDOW PRODUCTION · AUTOMATION

WEINIG offers more.



Production:

LUXSCAN Technologies Sarl
ZARE Ouest
L-4384 Ehlerange
Luxembourg

Telefon +352 540 416
Telefax +352 540 417
info@luxscan.com
www.luxscan.com

Sales:

MICHAEL WEINIG AG
Weinigstraße 2/4
D-97941 Tauberbischofsheim
Germany

Telefon +49 93 41 / 86-0
Telefax +49 93 41 / 70 80
info@weinig.com
www.weinig.com